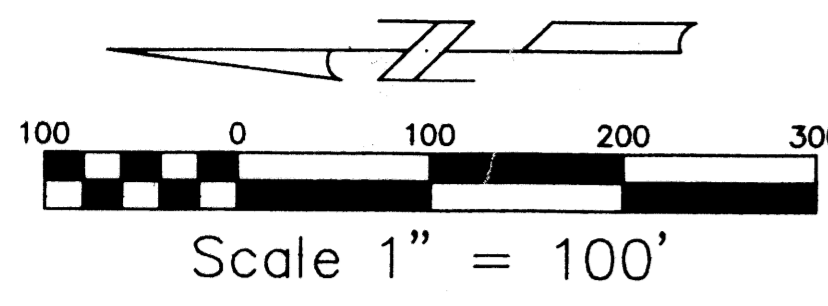


# ST. JOSEPH'S SCHOOL

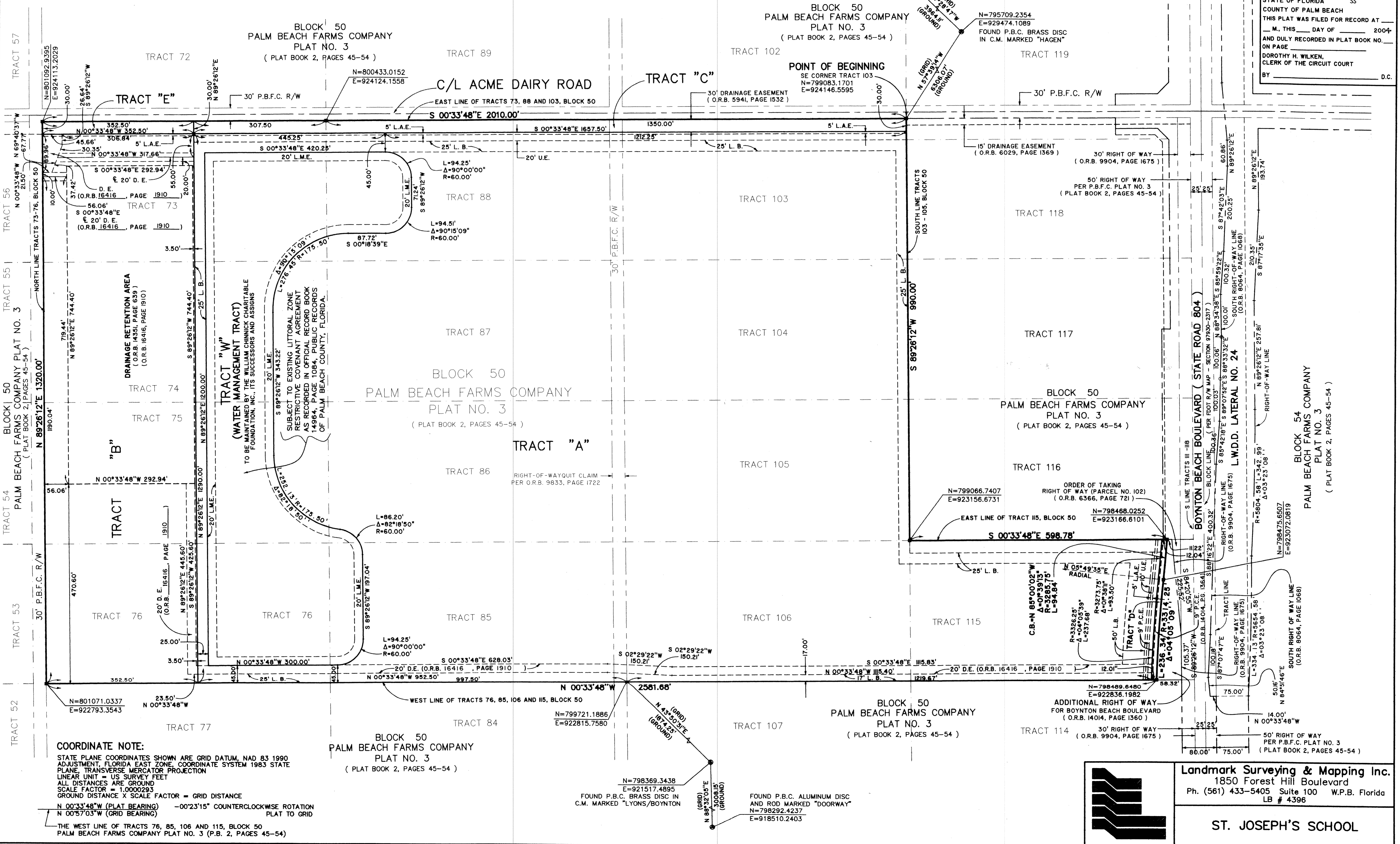
BEING THE REPLAT OF A PORTION OF BLOCK 50, PALM BEACH FARMS COMPANY PLAT NO. 3, AS RECORDED IN PLAT BOOK 2, PAGES 45 THROUGH 54, INCLUSIVE, PUBLIC RECORDS OF PALM BEACH COUNTY, FLORIDA. LYING IN SECTION 20, TOWNSHIP 45 SOUTH, RANGE 42 EAST, PALM BEACH COUNTY, FLORIDA.

SHEET 2 OF 2

90



STATE OF FLORIDA SS  
 COUNTY OF PALM BEACH  
 THIS PLAT WAS FILED FOR RECORD AT \_\_\_\_\_  
 M., THIS \_\_\_\_ DAY OF \_\_\_\_\_ 2004  
 AND DULY RECORDED IN PLAT BOOK NO. \_\_\_\_\_  
 ON PAGE \_\_\_\_\_  
 DOROTHY H. WILKEN,  
 CLERK OF THE CIRCUIT COURT  
 BY \_\_\_\_\_ D.C.



**COORDINATE NOTE:**  
 STATE PLANE COORDINATES SHOWN ARE GRID DATUM, NAD 83 1990 ADJUSTMENT, FLORIDA EAST ZONE, COORDINATE SYSTEM 1983 STATE PLANE, TRANSVERSE MERCATOR PROJECTION  
 LINEAR UNIT = US SURVEY FEET  
 ALL DISTANCES ARE GROUND  
 SCALE FACTOR = 1.0000293  
 GROUND DISTANCE X SCALE FACTOR = GRID DISTANCE  
 N 00°33'48"W (PLAT BEARING) -00°23'15" COUNTERCLOCKWISE ROTATION PLAT TO GRID  
 N 00°57'03"W (GRID BEARING)

BLOCK 50  
 PALM BEACH FARMS COMPANY  
 PLAT NO. 3  
 ( PLAT BOOK 2, PAGES 45-54 )

BLOCK 50  
 PALM BEACH FARMS COMPANY  
 PLAT NO. 3  
 ( PLAT BOOK 2, PAGES 45-54 )

BLOCK 50  
 PALM BEACH FARMS COMPANY  
 PLAT NO. 3  
 ( PLAT BOOK 2, PAGES 45-54 )

**Landmark Surveying & Mapping Inc.**  
 1850 Forest Hill Boulevard  
 Ph. (561) 433-5405 Suite 100 W.P.B. Florida  
 LB # 4396

**ST. JOSEPH'S SCHOOL**

SUBDIVISION St. Joseph's School  
 BOOK 101 PAGE 90  
 FLOOD ZONE B  
 QUAD # 50  
 SE 203-757  
 TAZ 745  
 PUD NAME